

The Olympic Forest Reserve 1897-1901

- Reserve after eliminations of 1900 and 1901
- Original Olympic Forest Reserve 1897
- Other Public Lands**
- Tribal Lands

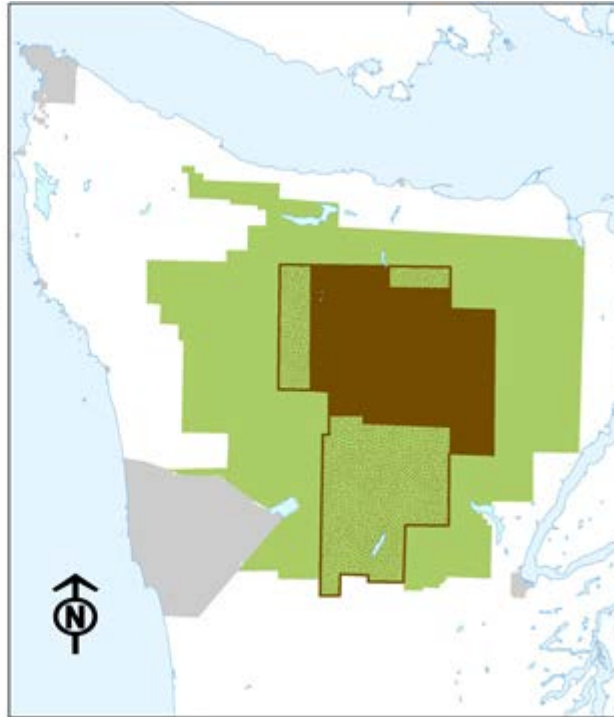


This map is for informational purposes and may not have been prepared for, or be suitable for legal, engineering, or surveying purposes

The light green shows the Original Olympic Forest Reserve as proclaimed by President Grover Cleveland in 1897. The dark green shows the reduced area proclaimed by President William McKinley in 1900 and 1901 after the chambers of commerce on the Olympic Peninsula and Seattle entered the political discussion.

Mt Olympus Monument after 1915 eliminations

-  Original Mt Olympus National Monument 1909
 -  Mount Olympus National Monument 1915
 -  Olympic Forest Reserve
- Other Public Lands**
-  Tribal Lands

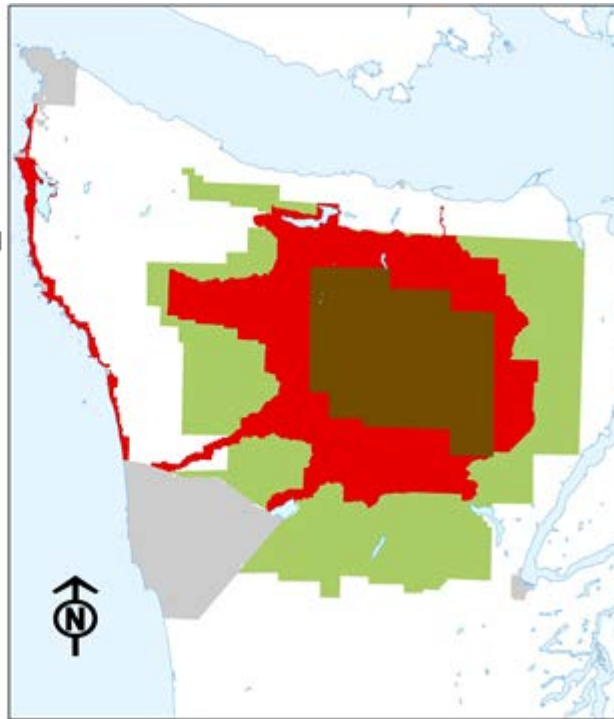


This map is for informational purposes
and may not have been prepared for,
or be suitable for legal, engineering, or
surveying purposes

The brown speckled and solid brown areas show the Olympic National Monument as proclaimed by President Theodore Roosevelt in 1907. The brown speckling shows the reduction made by President Woodrow Wilson in 1915 after the Seattle Chamber of Commerce and the secretaries of the Departments of Interior and Agriculture argued for the reduction.

Olympic National Park and additions 1938-1967

-  Olympic National Monument 1915
-  Olympic National Park Additions 1938-1967
-  Olympic Forest Reserve
- Other Public Lands**
-  Tribal Lands



This map is for informational purposes and may not have been prepared for, or be suitable for legal, engineering, or surveying purposes

The brown and red show the extent of the Olympic National Park after proclamations by Presidents Franklin Roosevelt and Harry Truman and the Omnibus Park Bill of 1976.

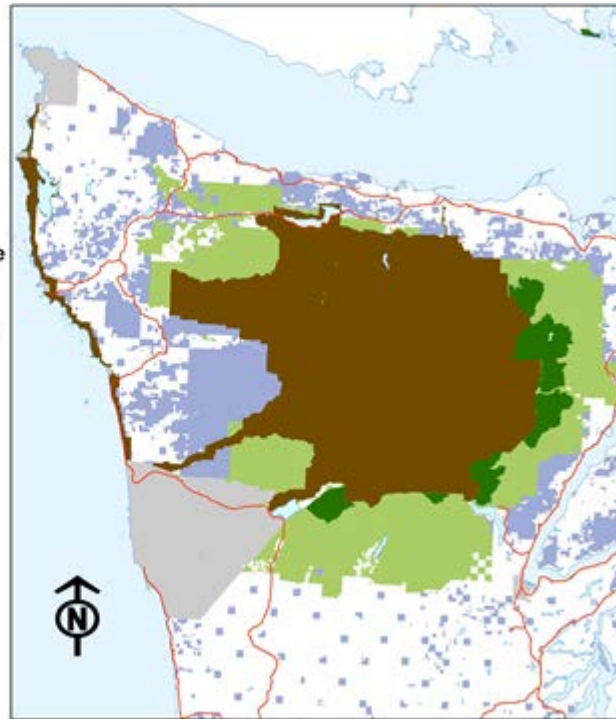
Current Land Use 2012

Olympic National Forest Land Use

- Partial Cut Areas (AMA, LSR)
- No Harvest (Wilderness Areas)
- Even-Aged Management (Matrix Forest)

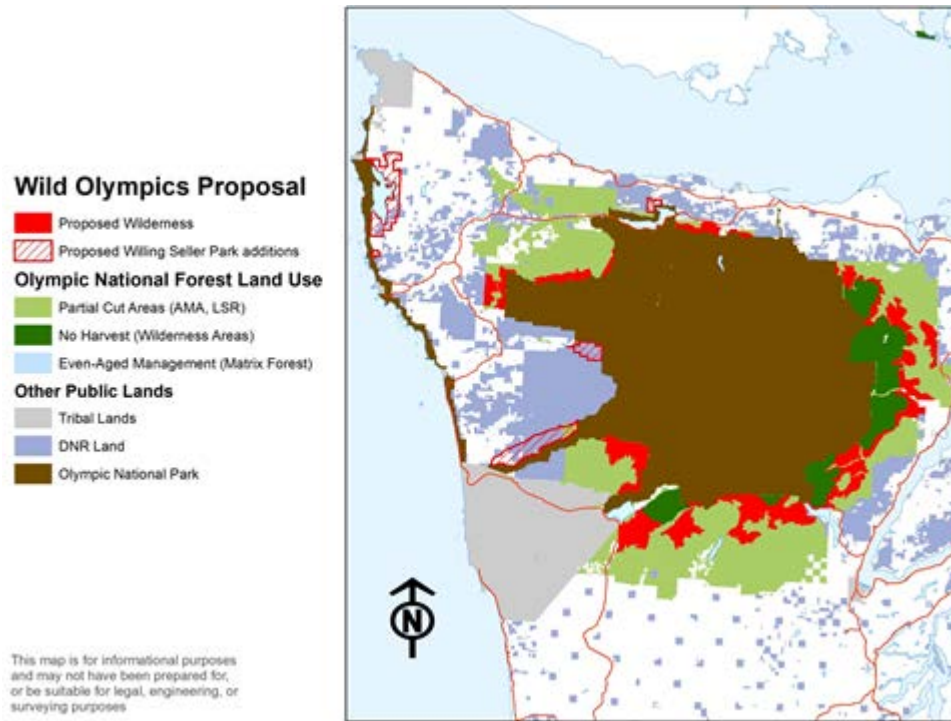
Other Public Lands

- Tribal Lands
- DNR Land
- Olympic National Park



This map is for informational purposes and may not have been prepared for, or be suitable for legal, engineering, or surveying purposes

The dark green shows the Olympic National Forest wilderness areas established by the 1964 Wilderness Act. Commercial timber harvest was still expected on the light green areas of the National Forest.



The red shows the first progression of wilderness expansion proposed by the Wild Olympics Campaign in 2009. The cross-hatched red shows the state and private lands where Olympic National Park would expand over. The light green shows the remaining Olympic National Forest where commercial timber harvest could only occur for the enhancement of late successional habitat or until the trees reach 80 years old.