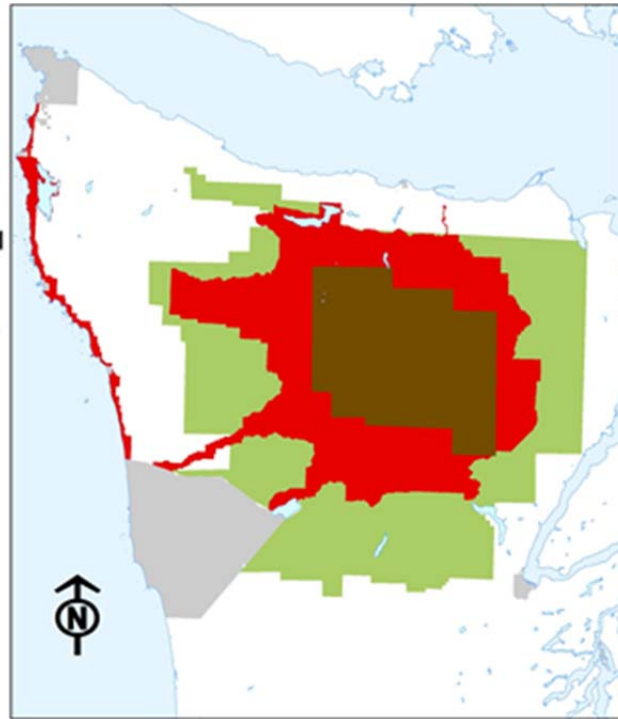


Olympic National Park and additions 1938-1967

-  Olympic National Monument 1915
-  Olympic National Park Additions 1938-1967
-  Olympic Forest Reserve
- Other Public Lands**
-  Tribal Lands



This map is for informational purposes and may not have been prepared for, or be suitable for legal, engineering, or surveying purposes

The brown and red show the extent of the Olympic National Park after proclamations by Presidents Franklin Roosevelt and Harry Truman and the Omnibus Park Bill of 1976.